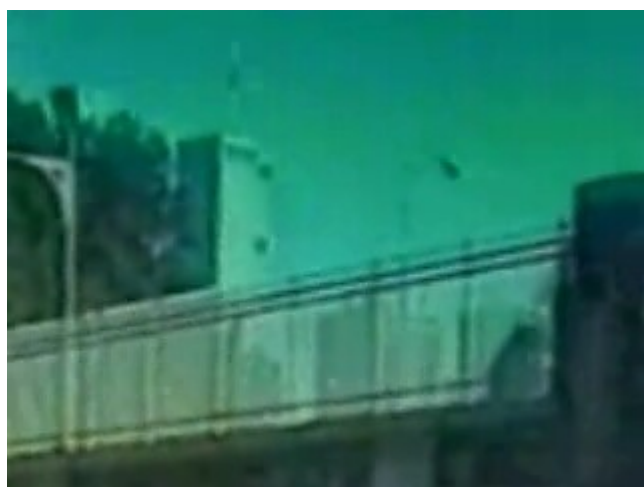


New First Hit Footage



Slow motion excerpt from

<http://users.adelphia.net/~earthwatch/2ndVideoOf1stTowerCloseup.mov>

Even a bad video carried more information than a good still.

From this video I can see that my initial impression from the one still I'd seen that the black object in the foreground was a whatzit was wrong.

It is a streetlamp in the middle distance.

Notice how extremely off-color the video becomes as the action progresses.

<http://thewebfairy.com/video/newfirsthit.wmv>

shows a longer cut than this FlixPro flash.

Notice that whatever is creating the familiar explosion is happening at the top of the video as well.



The developing explosion at the top is eventually subsumed by the more rapidly developing explosion below it.

This is shown more graphically in the anomalous bulge seen in the original fireman footage, which is explored by Brad at

<http://www.81x.com/WTC1/missile>

████████████████████ and is visible in
<http://thewebfairy.com/video/plane.no.demon.yes.wmv>
and every other slow motion view of the first hit.

